

Healthy Communities through Participatory Health Research with Stakeholders at the Municipal Level

Dr. Susanne Hartung

European Public Health Conference

Milan, 15 October 2015

PartKommPlus

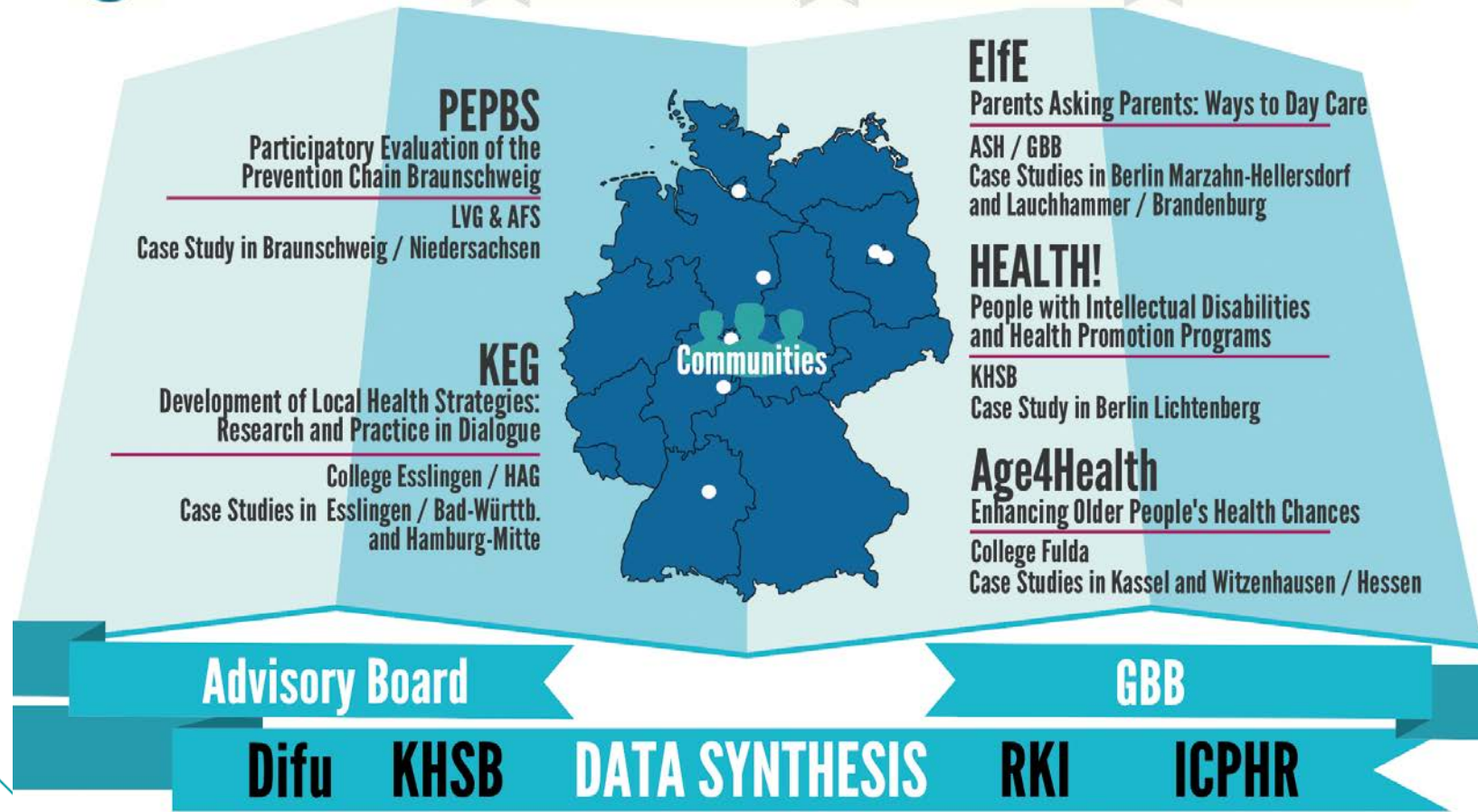
 **Coordination: KHSB**

Research Consortium for Healthy Communities

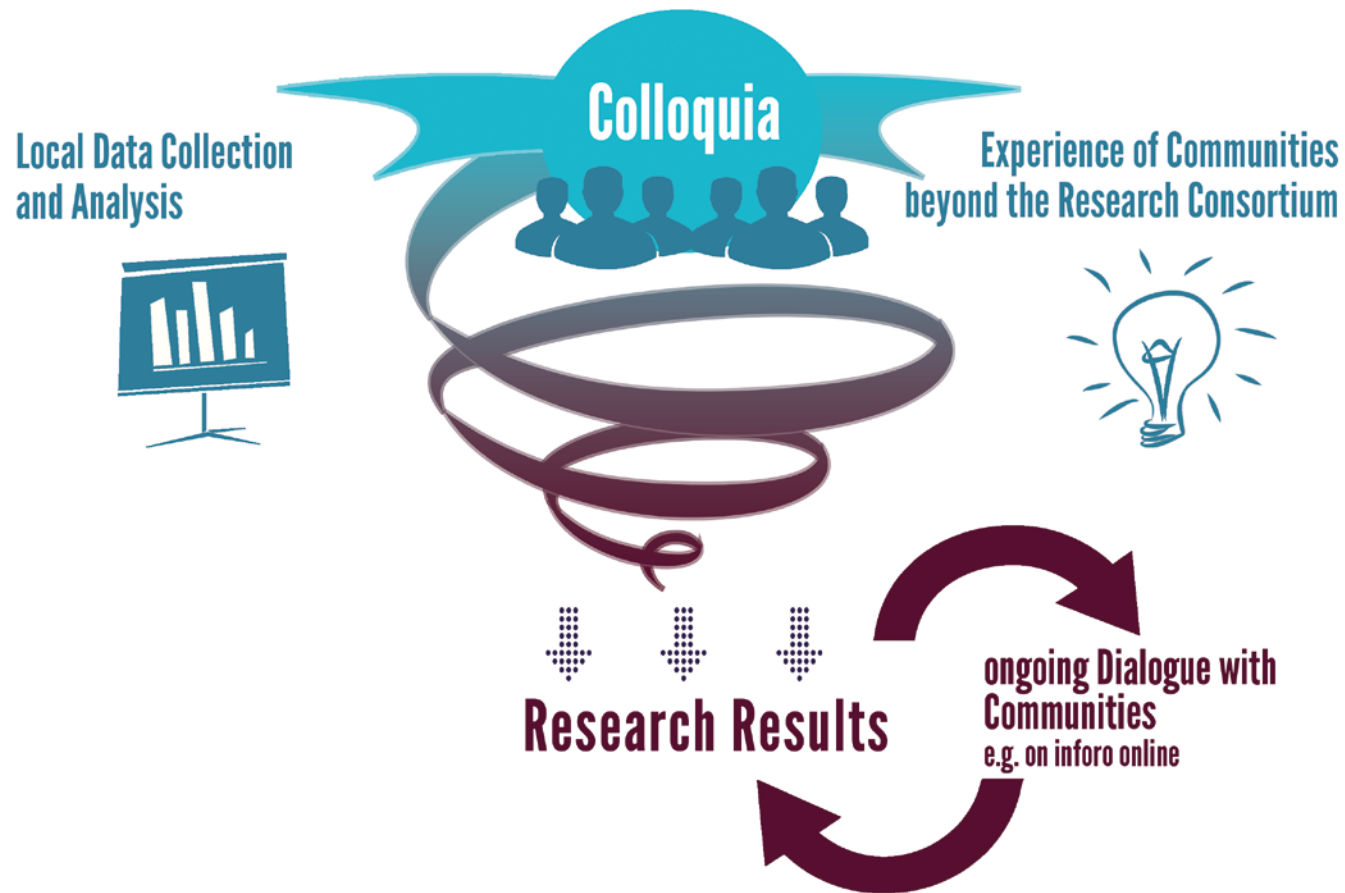
5 Projects

8 Case Studies

6 States



PartKommPlus Process of Data Synthesis and Communication



Research Questions:

1. What **factors determine the successful implementation** and maintenance of integrated municipal strategies for health promotion in Germany?
2. How can a wide range of stakeholders be engaged in the IMS process using Participatory Health Research, with a particular focus on **intersectoral collaboration and the participation** of vulnerable communities?

Stakeholder in the project are:

- Local communities and other engaged citizens
- Local authorities
- Practitioners

Challenges

- to re-negotiate the research question with the stakeholders
- to discover and incorporate the interests of all participants
- to recognize process data as primary data in terms of the iterative spiral movement common to action research

