



**Gesundheit  
Berlin-Brandenburg e.V.**  
Arbeitsgemeinschaft  
für Gesundheitsförderung



**STADT  
LAUCHHAMMER**  
...überraschend vielseitig



**Marzahn-  
Hellersdorf**  
Berlins beste Aussichten



**Netzwerk  
Gesunde  
Kinder**  
Niederlausitz



**ASH  
Berlin**  
Alice Salomon Hochschule Berlin  
University of Applied Sciences

## An inclusive structure for municipal research collaborations in Germany



COLLABORATIVE ACTION RESEARCH NETWORK (CARN)  
International Conference, Lincoln, 11th-13th November 2016

Ina Schaefer MPH, Prof. Dr. Gesine Bär, Alice Salomon Hochschule Berlin  
Ulrike von Haldenwang, Janina Koster, Gesundheit Berlin Brandenburg



**PartKommPlus**  
FORSCHUNGSVERBUND FÜR GESUNDE KOMMUNEN

Ein Projekt von




**PartNet**  
NETZWERK PARTIZIPATIVE GEMEINGEMEINSCHAFTEN

gefördert von



Bundesministerium  
für Bildung  
und Forschung

## ELfE – Parents Asking Parents



**objectives**


- to support health equality for pre-school children
- to establish peer research in order to support the development of integrated municipal strategies (IMS) for health promotion


**partners**

- Berlin Marzahn-Hellersdorf
- Lauchhammer
- Network for Healthy Children in Lauchhammer


**funding**

36 months, ending April 2018





**ASH  
Berlin**  
Alice Salomon Hochschule Berlin  
University of Applied Sciences



**Gesundheit  
Berlin-Brandenburg e.V.**  
Arbeitsgemeinschaft  
für Gesundheitsförderung

2

## Berlin/Marzahn-Hellersdorf



Population: 261,954  
(30 June 2016)

Pre-schools: approx. 100

Approx. 37% children 3 y.o. or younger and approx. 86% children 3-6 y.o. attend pre-school

Free pre-school in Berlin since 2012



Alice Salomon Hochschule Berlin  
University of Applied Sciences



Gesundheit  
Berlin-Brandenburg e.V.  
Arbeitsgemeinschaft  
für Gesundheitsförderung

3

## Diversity in Marzahn-Hellersdorf



<http://www.travelguide.world/deutschland/berlin/marzahn-hellersdorf.html>

[http://www.monika-gruetters.de/6\\_15\\_Wahlkreis\\_Marzahn-Hellersdorf.html](http://www.monika-gruetters.de/6_15_Wahlkreis_Marzahn-Hellersdorf.html)

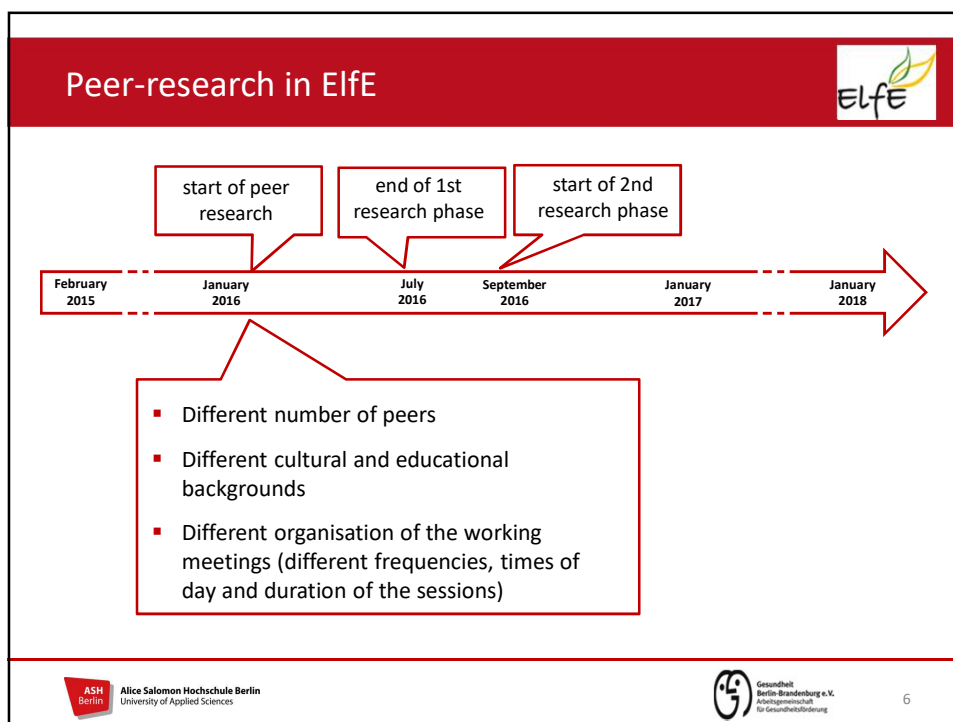
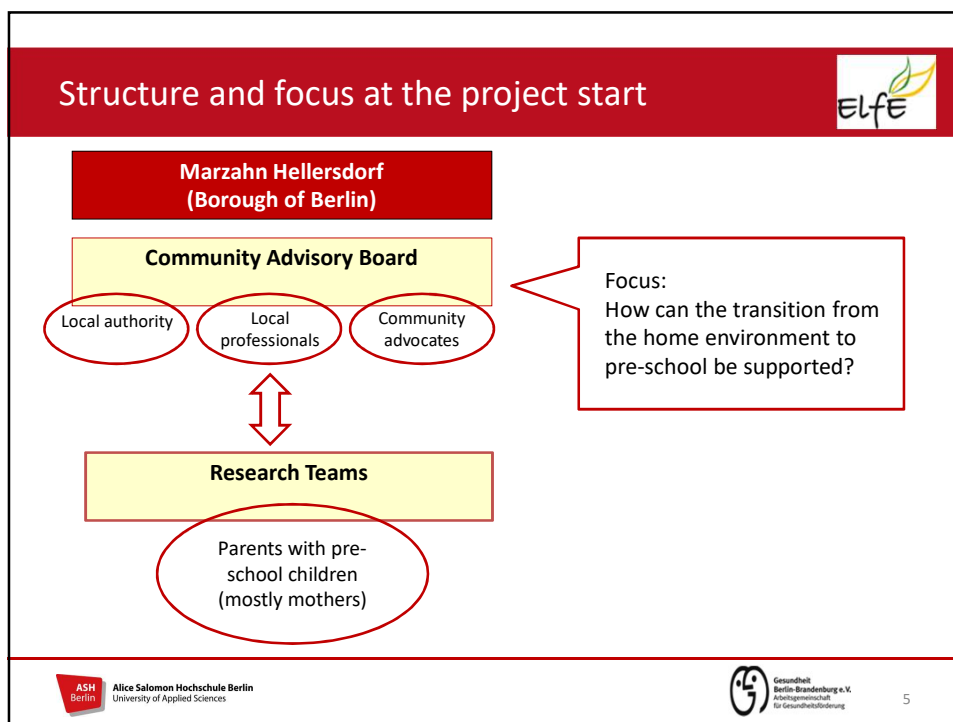


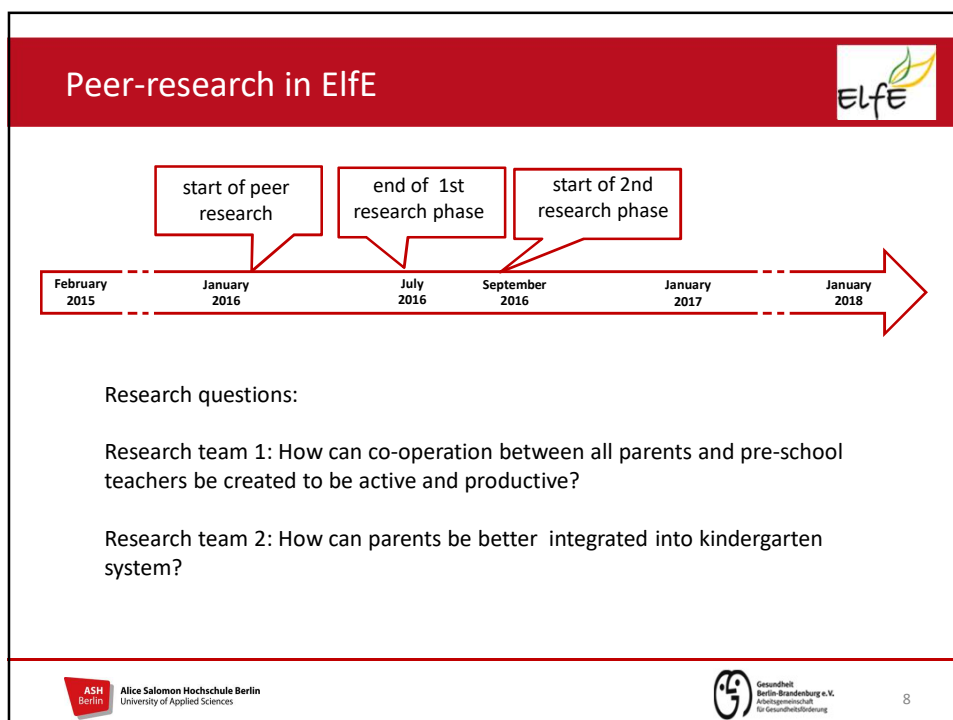
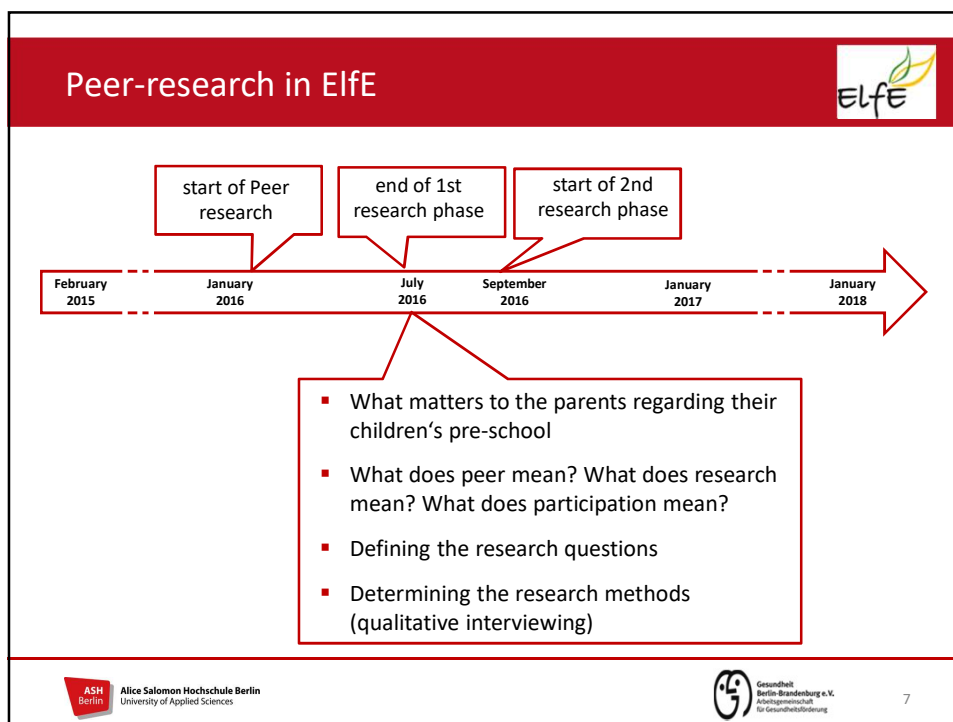
Alice Salomon Hochschule Berlin  
University of Applied Sciences



Gesundheit  
Berlin-Brandenburg e.V.  
Arbeitsgemeinschaft  
für Gesundheitsförderung

4



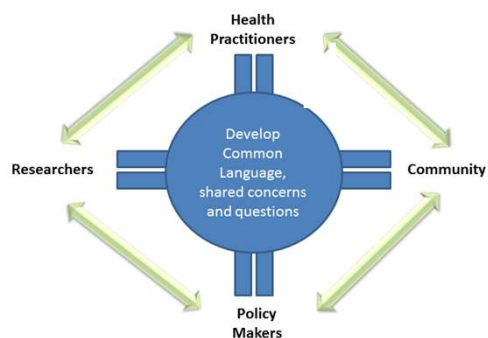


## Participatory Health Research (PHR)



**The goal of PHR** is to maximize the participation of those whose life or work is the subject of the research in all stages of the research process, including the formulation of the research question and goal, (...). Such participation is the core, defining principle of PHR, setting this type of research apart from other approaches in the health field.

<http://www.icphr.org/icphr-resources.html>



(Quelle: [www.healthyvoices.org](http://www.healthyvoices.org) [ 22.6.2014])



Alice Salomon Hochschule Berlin  
University of Applied Sciences



Gesundheit  
Berlin-Brandenburg e.V.  
Arbeitsgemeinschaft  
für Gesundheitsförderung

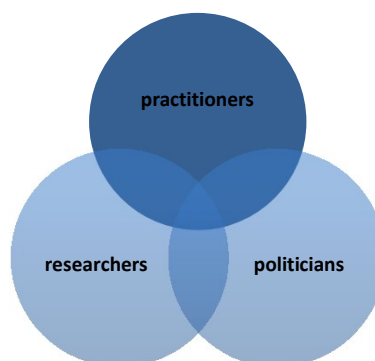
9

## Practitioner research



**Practitioner research** in social and health care means empirical research done by practitioners (specialised staff) who want to answer questions in their own field of work.

[Van der Donk t al. 2014, S. 26](#), own translation



(Quelle: [www.healthyvoices.org](http://www.healthyvoices.org) [22.6.2014])



Alice Salomon Hochschule Berlin  
University of Applied Sciences



Gesundheit  
Berlin-Brandenburg e.V.  
Arbeitsgemeinschaft  
für Gesundheitsförderung

10

## How to bring them into balance?





Alice Salomon Hochschule Berlin  
University of Applied Sciences



Gesundheit  
Berlin-Brandenburg e.V.  
Arbeitsgemeinschaft  
für Gesundheitsförderung

11

## How to bring them into balance?


- To develop a culture of managing conflicts – discuss the problem
- To integrate members of the research team into the advisory board
- To invite guests from the advisory board to individual meetings of the research team
- To clarify the goals of the advisory board



What else would you suggest?



Alice Salomon Hochschule Berlin  
University of Applied Sciences



Gesundheit  
Berlin-Brandenburg e.V.  
Arbeitsgemeinschaft  
für Gesundheitsförderung

12



© Stremmler

#### contact

Ina Schaefer

Alice Salomon university of applied science

Alice-Salomon-Platz 5, 12627 Berlin

E-Mail: [ina.schaefer@ash-berlin.eu](mailto:ina.schaefer@ash-berlin.eu)

## Thank you!



Alice Salomon Hochschule Berlin  
University of Applied Sciences



Gesundheit  
Berlin-Brandenburg e.V.  
Arbeitsgemeinschaft  
für Gesundheitsförderung

13